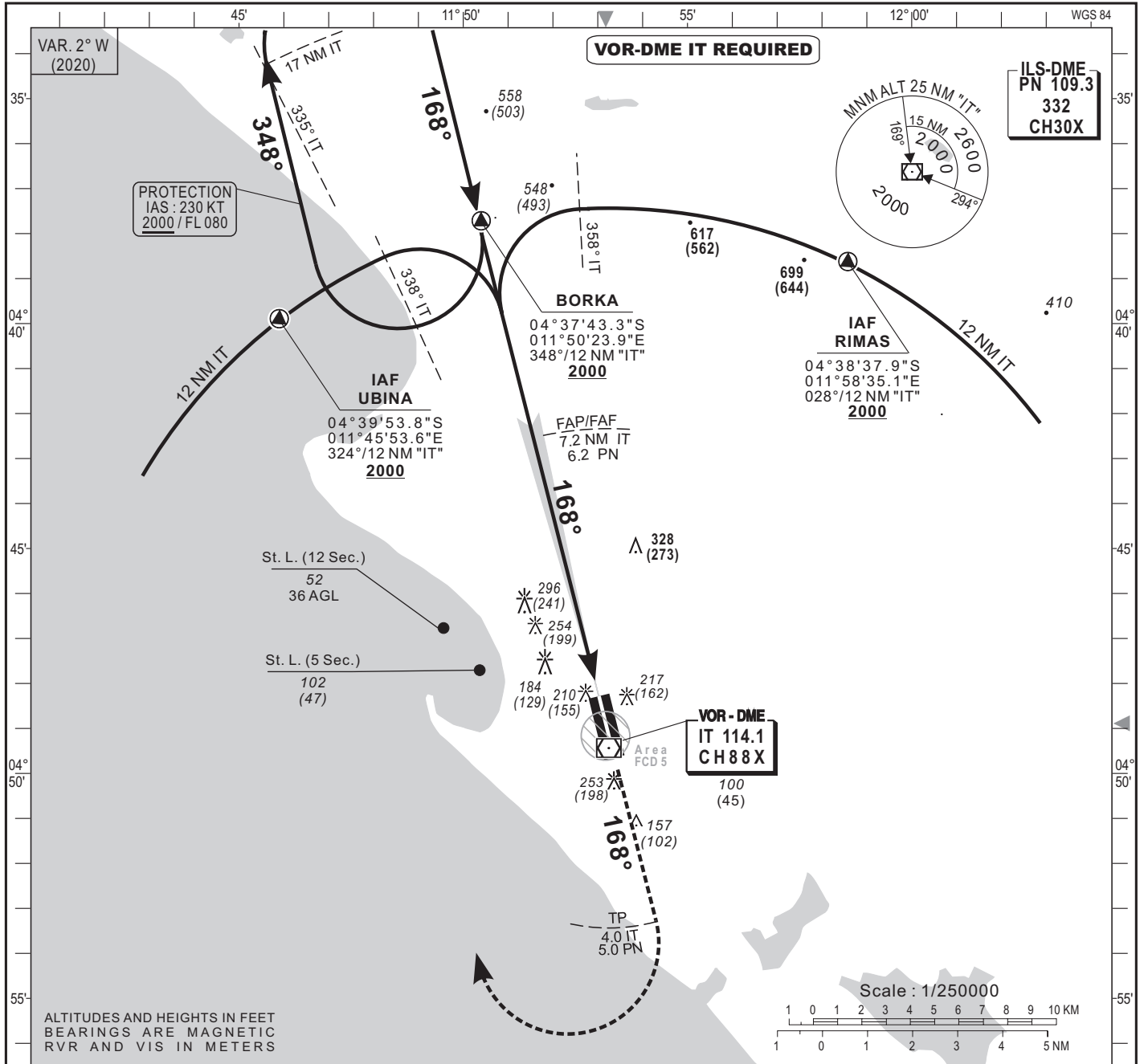
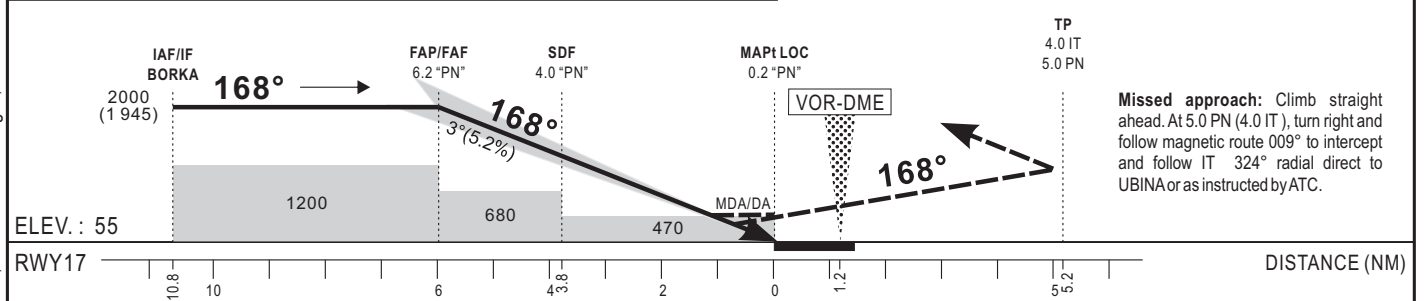


HEIGHTS RELATED TO THRESHOLD 17 ELEVATION



Distance to PN (NM)	FAP/FAF	5	4	3	2	ALTITUDE DE TRANSITION: 2700
Altitude (ft)	2000	1640	1320	1000	680	



CAT	Cat. 1				LOC				CIRCLING (*)				RVR for take-off: CAT A - B-C : 400 Cat D : 400
	OCA (OCH)	DA	DH	RVR(1) RVR(2)	OCA (OCH)	MDA MDH	RVR(1) RVR(2)	OCA (OCH)	MDA MDH	VIS			
A	278 (223)	280 (230)	600	1000	463 (408)	470 (410)	900 1500	528 (473)	530 (480)	1500	Timing FAF-MAPt 6.0 NM		
B	290 (235)	290 (240)	600	1000	463 (408)	470 (410)	1000 1500	590 (535)	590 (540)	1600			
C	298 (243)	300 (250)	600	1000	463 (408)	470 (410)	1000 1800	820 (765)	820 (770)	2400			
D	309 (254)	310 (260)	650	1200	463 (408)	470 (410)	1400 2000	820 (765)	820 (770)	3600			

Notes : (1) With approach lights - (2) Without approach lights
 - (*) OCH and MDH AAL - Daytime only
 - Climbing sector after take-off from RWY17: Between radials 027° "IT" and 297° "IT".

- RDH : 15 m

CORRECTIONS: Magnetic variation, VOR altitude/height, RVR for take-off.